

How to add hardware to SIMHUB software

1. Please install the latest version of SIMHUB software, which you can download from its homepage (<https://www.simhubdash.com/>)

Note: After updating to the latest version of SIMHUB, the system will automatically recognize the 7.8-inch dashboard.

Note: If you are installing SIMHUB for the first time, you must restart the computer after installation. After restarting the computer, run SIMHUB. It will prompt you (the red area at the top of the window) to restart SIMHUB as an administrator.

Special situation: After correctly installing the SIMHUB software, the 7.8-inch screen cannot connect to SIMHUB and does not display any content. Please reinstall the Vocore screen driver.

Please do not change the default C drive path during installation!!! Please do not change the installation path of the LCD driver when installing it, otherwise the driver will not work!!!

When installing the SIMHUB software, please check all options to ensure that you have installed the VOCORE driver correctly.

Before installing the drive unit, make sure that the switch on the back is in the ON position.

Please note that you must connect the 7.8-inch dashboard USB cable to the **USB 3.0 port on the back of your computer.**

This ensures the stability of USB data!!!

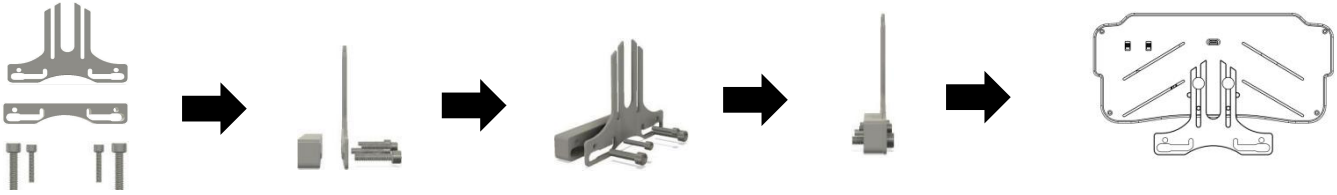
2. Display dashboard: Run SIMHUB software, enter devices --add new device from the window, and select or search for: General Vocore Screen(4 4.3 5 6.8 10) from the list.

Open SIMHUB software, click the device in the left directory tree bar, and the system will prompt you to add hardware. If you are not prompted, click Add New Device to start adding. Find the Generic Vocore Screen in the list, and then click OK to add it!

3. RGB LEDS settings: In the SIMHUB software window, enter Arduino --My Hardware and check if SIMHUB is connected to dashboard. Once the connection is successful, you can enter the RGB LEDS window to set RGB LEDS.

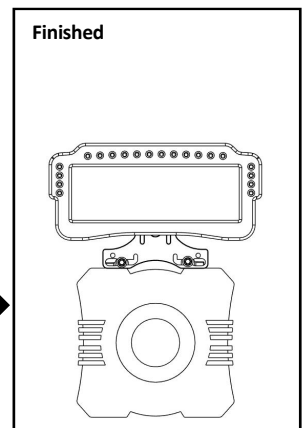
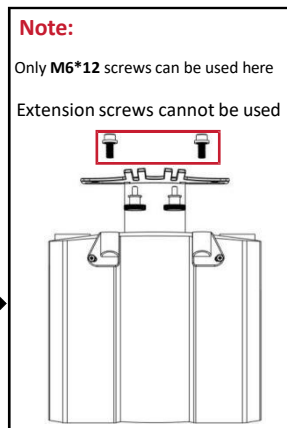
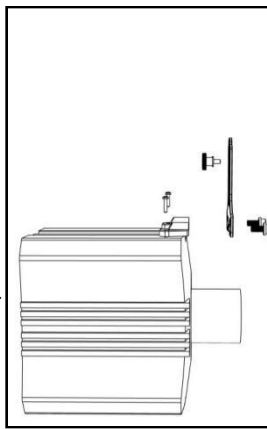
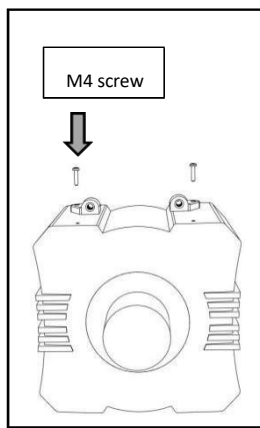
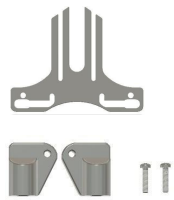
Dashboard bracket accessories

When you need to lower the dashboard, please use bracket auxiliary accessories to prevent insufficient installation space when lowering the dashboard.



We have designed specialized parts for MOZA R3 R5 R9 wheel base to install dashboard brackets.

***Special cases**

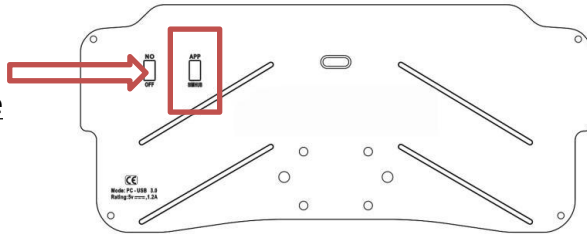


7.8-inch Dashboard Bluetooth LED settings

Toggle switch:

Top: Phone APP mode

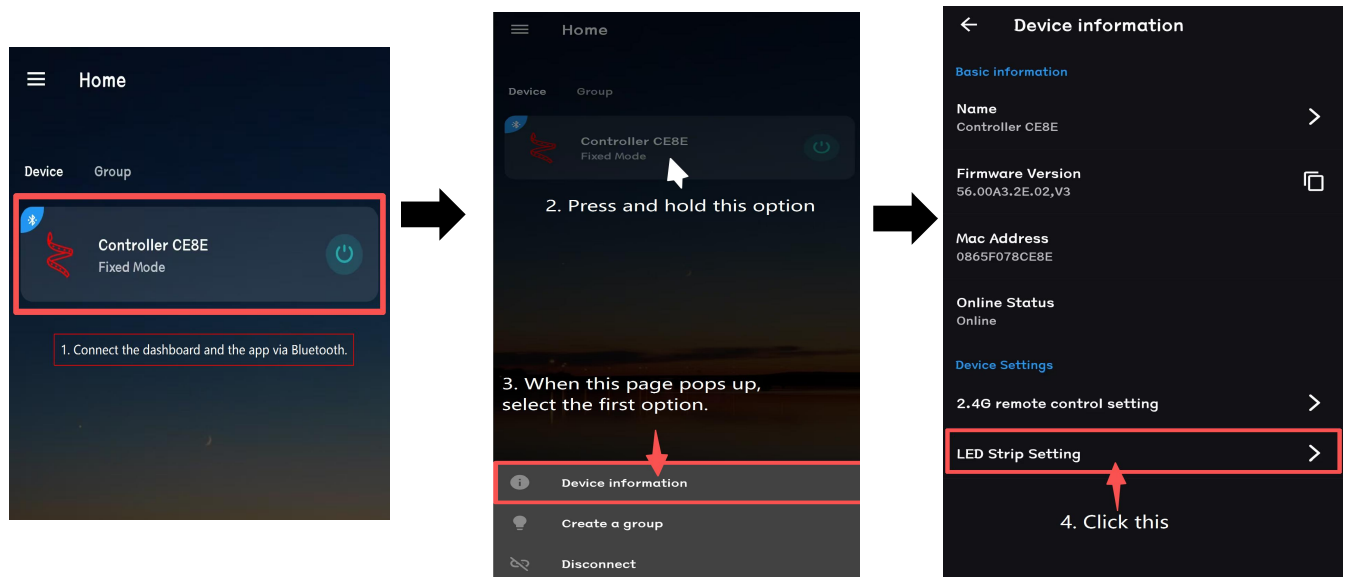
Bottom: Simhub mode



Phone APP download
IOS/Android

The APP LED indicator light is mainly used to illuminate even when not playing games.

To enter the game, please enable SIMHUB mode.



6. Click here to return to the main page.

8. The program has over 100 LED modes that can be set.

